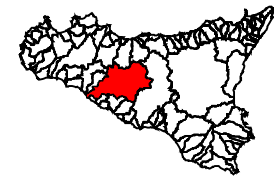


## Piano Stralcio di Bacino per l'Assetto Idrogeologico (P.A.I.)

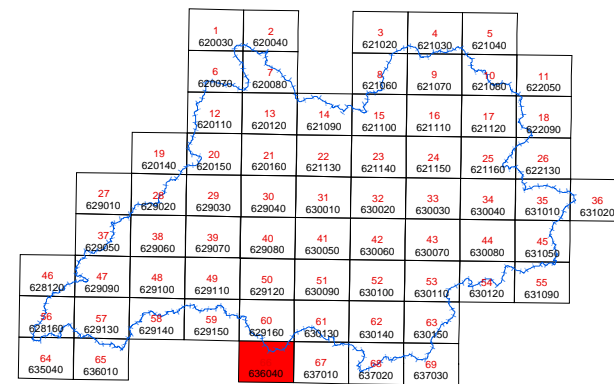
(ART.1 D.L. 180/98 convertito con modifiche con la L.267/98 e ss. mm. ii.)

## Bacino Idrografico del Fiume Platani (063)



**CARTA DELLA PERICOLOSITA' E DEL  
RISCHIO GEOMORFOLOGICO N° 66**

COMUNI DI :  
ARAGONA-FAVARA  
**Scala 1:10.000**



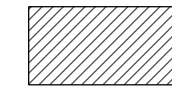
Anno 2005

## LEGENDA

### LIVELLI DI PERICOLOSITA'



P0 basso



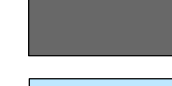
P1 moderato



P2 medio



P3 elevato

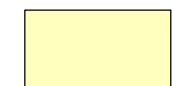


P4 molto elevato



Sito d'attenzione

## LIVELLI DI RISCHIO



R1 moderato



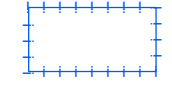
R2 medio



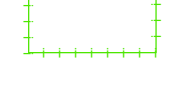
R3 elevato



R4 molto elevato



Limite bacino idrografico



Limite comunale

