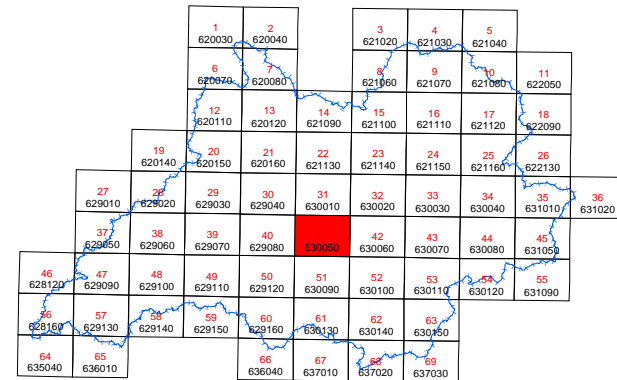







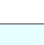
COMUNI DI :
ACQUAVIVA PLATANI-CAMPOFRANCO-CASTELTERMINI-SUTERA

Scala 1:10.000



Anno 2005

LEGENDA

-  Area di esondazione per manovra degli organi di scarico della diga Fanaco
 -  Area di esondazione per ipotetico collasso dello sbarramento
 -  Area dell'invaso della diga Fanaco
 -  Diga Fanaco
 -  Limite bacino idrografico
 -  Limite comunale

