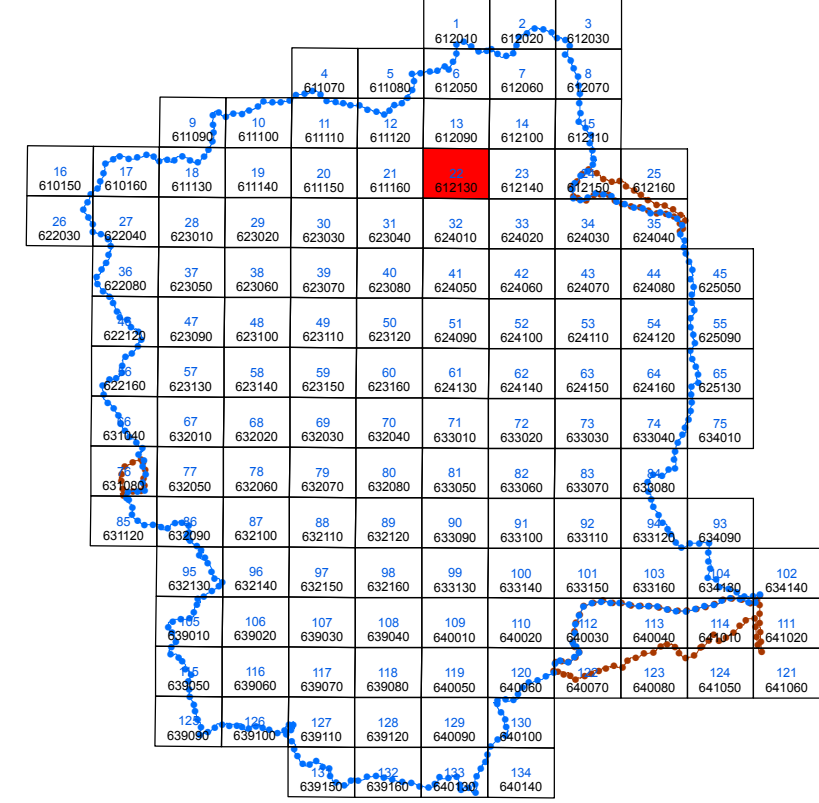
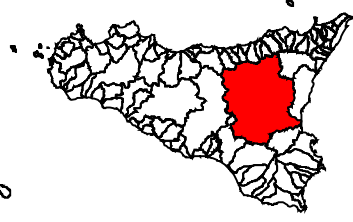


**Bacino Idrografico del Fiume Simeto (094)**  
**area tra i bacini del Simeto e del S. Leonardo (094A)**  
**Laghi di Pergusa (094B) e Maletto (094C)**



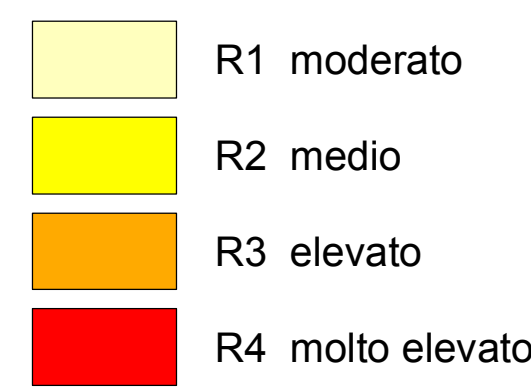
Anno 2011




## LEGENDA

## LIVELLI DI PERICOLOSITA'



## LIVELLI DI RISCHIO



-  Limite bacino idrografico
-  Limite area intermedia e laghi di Pergusa e Maletto
-  Limite comunale

