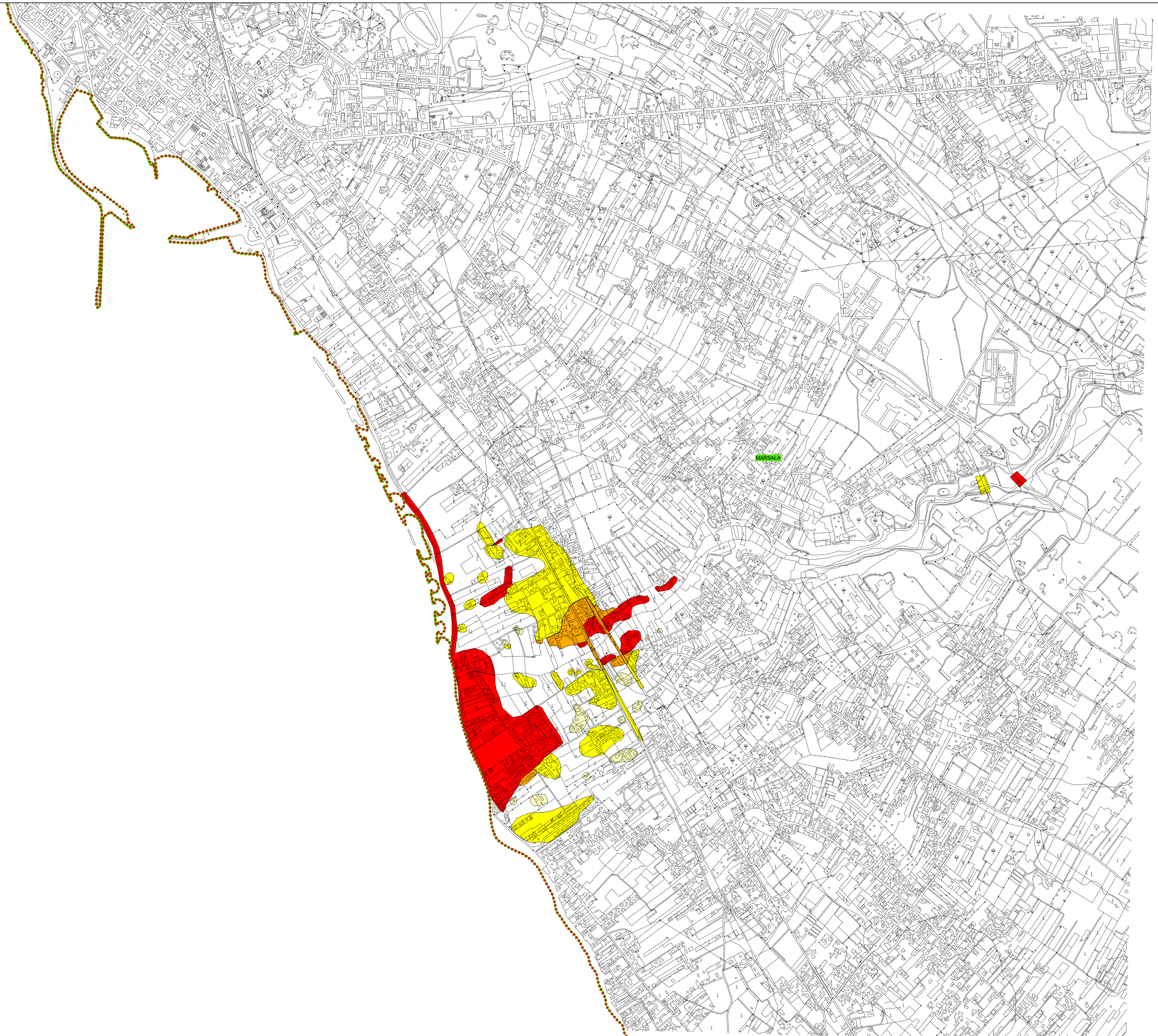


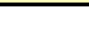





**DIPARTIMENTO TERRITORIO E AMBIENTE**  
**Servizio 4 "ASSETTO DEL TERRITORIO E DIFESA DEL SUOLO"**

(ART.1 D.L. 180/98 CONVERTITO CON MODIFICHE CON LA L.267/98 E SS.MM.II.)

COMUNI DI  
*Marsala*

Figure 1 shows a 4x4 grid of 16 cells. Each cell contains a 6-digit number. A path of 15 red dots is shown, starting at cell 1 (605004) and ending at cell 15 (617080). The path visits cells 1, 2, 3, 4, 5, 6, 7, 8, 9, 10, 11, 12, 13, 14, and 15. Cell 6 (617020) is highlighted in red.



- |  |                          |
|--|--------------------------|
|  | R1 Rischio moderato      |
|  | R2 Rischio medio         |
|  | R3 Rischio elevato       |
|  | R4 Rischio molto elevato |
|  | Limite area territoriale |
|  | Limite comunale          |