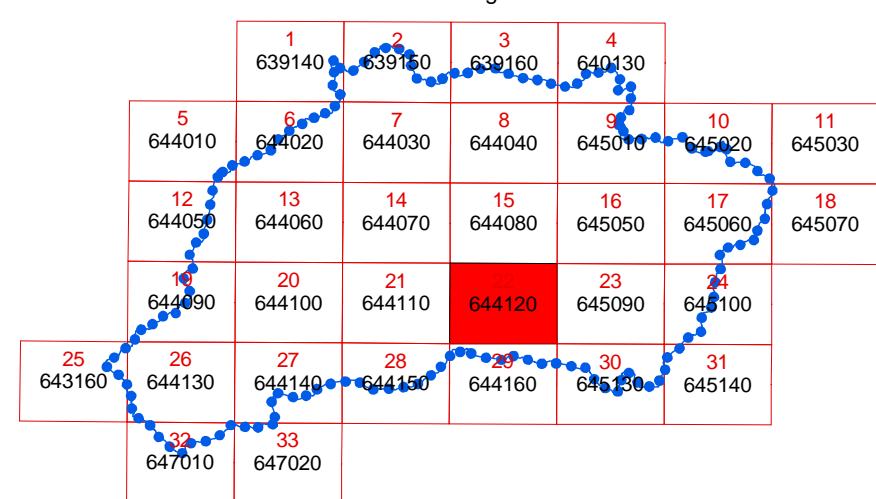


DIPARTIMENTO TERRITORIO E AMBIENTE
Servizio 4 "ASSETTO DEL TERRITORIO E DIFESA DEL SUOLO"

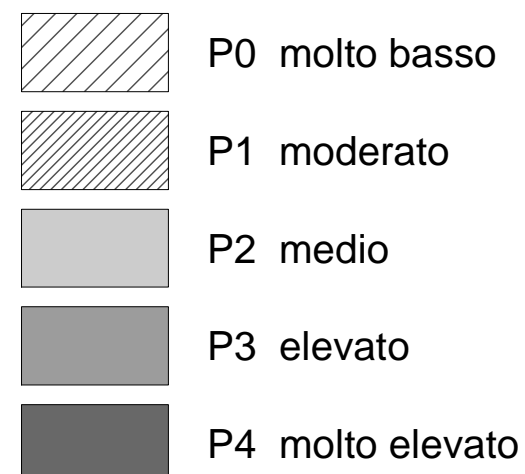
(ART.1 D.L. 180/98 CONVERTITO CON MODIFICHE CON LA L.267/98 E SS.MM.II.)



COMUNI DI :
CHIARAMONTE GULFI-LICODIA EUBEA-MAZZARRONE

Scala 1:10.000



LIVELLI DI PERICOLOSITA'



 Limite bacino idrografico
 Limite comunale

